

B-380 Series - Brightfield Models

2

Laboratory

B-382PLi-ALC



Brightfield binocular microscope with IOS N-PLAN (Infinity Corrected) objectives, rackless stage and combining the exclusive **X-LED³** with **ALC** (Automatic Light Control) for great-looking, rich and high-quality view.

Observation mode: Brightfield.

Head: Binocular, 30° inclined, 360° rotating (when ALC cable is unplugged).

Interpupillary distance: Adjustable between 48 and 75 mm.

Dioptric adjustment: On the left eyepiece tube.

Eyepieces: WF10x/20 mm, high eye-point and secured by screw.

Nosepiece: Quintuple revolving nosepiece, rotation on ball bearings.

Objectives:

| | |
|---------------------|----------------------------------|
| IOS N-PLAN 4x/0.10 | IOS N-PLAN 10x/0.25 |
| IOS N-PLAN 40x/0.65 | IOS N-PLAN 100x/1.25 (Oil/Water) |

All with anti-fungus treatment.

Specimen stage: Double layer rackless mechanical stage, 233x147 mm, 78x54 mm X-Y range.

Focusing: Coaxial coarse (adjustable tension) and fine focusing mechanism with limit stop to prevent the contact between objective and specimen.

Condenser: Abbe N.A. 1.25, with objective-coded iris diaphragm, focusable and centerable.

Illumination (Fixed Koehler type): X-LED³ with white 3.6 W LED (6,300K) and brightness control. **ALC** system.
Multi-plug 100-240Vac/6Vdc external power supply.

B-383PLi



Brightfield trinocular microscope with IOS N-PLAN (Infinity Corrected) objectives, rackless stage and the exclusive **X-LED³** for great-looking, rich and high-quality view.

Observation mode: Brightfield.

Head: Trinocular (fixed 50/50), 30° inclined, 360° rotating.

Interpupillary distance: Adjustable between 48 and 75 mm.

Dioptric adjustment: On the left eyepiece tube.

Eyepieces: WF10x/20 mm, high eye-point and secured by screw.

Nosepiece: Quintuple revolving nosepiece, rotation on ball bearings.

Objectives:

| | |
|---------------------|----------------------------------|
| IOS N-PLAN 4x/0.10 | IOS N-PLAN 10x/0.25 |
| IOS N-PLAN 40x/0.65 | IOS N-PLAN 100x/1.25 (Oil/Water) |

All with anti-fungus treatment.

Specimen stage: Double layer rackless mechanical stage, 233x147 mm, 78x54 mm X-Y range.

Focusing: Coaxial coarse (adjustable tension) and fine focusing mechanism with limit stop to prevent the contact between objective and specimen.

Condenser: Abbe N.A. 1.25, with objective-coded iris diaphragm, focusable and centerable.

Illumination (Fixed Koehler type): X-LED³ with white 3.6 W LED (6,300K) with brightness control. Multi-plug 100-240Vac/6Vdc external power supply.

B-380 Series - Phase Contrast Models

B-382PH-ALC



Phase contrast, darkfield and brightfield binocular microscope with W-PLAN objectives, rackless stage and combining the exclusive **X-LED³** with **ALC** (Automatic Light Control) for great-looking, rich and high-quality view.

Observation mode: Brightfield, phase contrast and darkfield (dry).

Head: Binocular, 30° inclined, 360° rotating (when ALC cable is unplugged).

Interpupillary distance: Adjustable between 48 and 75 mm.

Dioptric adjustment: On the left eyepiece tube.

Eyepieces: WF10x/20 mm, high eye-point and secured by screw.

Nosepiece: Quintuple revolving nosepiece, rotation on ball bearings.

Objectives:
 W-PLAN 4x/0.10 W-PLAN PH 10x/0.25
 W-PLAN PH 40x/0.65 W-PLAN PH 100x/1.25 (Oil/Water)
 All with anti-fungus treatment.

Specimen stage: Double layer rackless mechanical stage, 150x139 mm, 75x33 mm X-Y range.

Focusing: Coaxial coarse (adjustable tension) and fine focusing mechanism with limit stop to prevent the contact between objective and specimen.

Condenser: Phase condenser (10x/20x, 40x, 100x) with darkfield (dry) and brightfield.

Illumination (Fixed Koehler type): X-LED³ with white 3.6 W LED (6,300K) and brightness control. **ALC** system.
 Multi-plug 100-240Vac/6Vdc external power supply.

B-383PH



Phase contrast, darkfield and brightfield trinocular microscope with W-PLAN objectives, rackless stage and the exclusive **X-LED³** for great-looking, rich and high-quality view.

Observation mode: Brightfield, phase contrast and darkfield (dry).

Head: Trinocular (fixed 50/50), 30° inclined, 360° rotating.

Interpupillary distance: Adjustable between 48 and 75 mm.

Dioptric adjustment: On the left eyepiece tube.

Eyepieces: WF10x/20 mm, high eye-point and secured by screw.

Nosepiece: Quintuple revolving nosepiece, rotation on ball bearings.

Objectives:
 W-PLAN 4x/0.10 W-PLAN PH 10x/0.25
 W-PLAN PH 40x/0.65 W-PLAN PH 100x/1.25 (Oil/Water)
 All with anti-fungus treatment.

Specimen stage: Double layer rackless mechanical stage, 150x139 mm, 75x33 mm X-Y range.

Focusing: Coaxial coarse (adjustable tension) and fine focusing mechanism with limit stop to prevent the contact between objective and specimen.

Condenser: Phase condenser (10x/20x, 40x, 100x) with darkfield (dry) and brightfield.

Illumination (Fixed Koehler type): X-LED³ with white 3.6 W LED (6,300K) with brightness control. Multi-plug 100-240Vac/6Vdc external power supply.

B-380 Series - Phase Contrast Models

2

Laboratory

B-382Phi-ALC



Phase contrast, darkfield and brightfield binocular microscope with IOS W-PLAN (Infinity Corrected) objectives, rackless stage and combining the exclusive **X-LED³** with **ALC** (Automatic Light Control) for great-looking, rich and high-quality view.

Observation mode: Brightfield, phase contrast and darkfield (dry).

Head: Binocular, 30° inclined, 360° rotating (when ALC cable is unplugged).

Interpupillary distance: Adjustable between 48 and 75 mm.

Dioptric adjustment: On the left eyepiece tube.

Eyepieces: WF10x/20 mm, high eye-point and secured by screw.

Nosepiece: Quintuple revolving nosepiece, rotation on ball bearings.

Objectives:

IOS W-PLAN PH 10x/0.25 IOS W-PLAN PH 20x/0.40
IOS W-PLAN PH 40x/0.65 IOS W-PLAN PH 100x/1.25 (Oil)
All with anti-fungus treatment.

Specimen stage: Double layer rackless mechanical stage, 233x147 mm, 78x54 mm X-Y range.

Focusing: Coaxial coarse (adjustable tension) and fine focusing mechanism with limit stop to prevent the contact between objective and specimen.

Condenser: Phase condenser (10x/20x, 40x, 100x) with darkfield (dry) and brightfield.

Illumination (Fixed Koehler type): X-LED³ with white 3.6 W LED (6,300K) and brightness control. **ALC** system. Multi-plug 100-240Vac/6Vdc external power supply.

B-383Phi



Phase contrast, darkfield and brightfield microscope with IOS W-PLAN (Infinity Corrected) objectives, rackless stage and the exclusive **X-LED³** for great-looking, rich and high-quality view.

Observation mode: Brightfield, phase contrast and darkfield (dry).

Head: (50/50), 30° inclined, 360° rotating.

Interpupillary distance: Adjustable between 48 and 75 mm.

Dioptric adjustment: On the left eyepiece tube.

Eyepieces: WF10x/20 mm, high eye-point and secured by screw.

Nosepiece: Quintuple revolving nosepiece, rotation on ball bearings.

Objectives:

IOS W-PLAN PH 10x/0.25 IOS W-PLAN PH 20x/0.40
IOS W-PLAN PH 40x/0.65 IOS W-PLAN PH 100x/1.25 (Oil)
All with anti-fungus treatment.

Specimen stage: Double layer rackless mechanical stage, 233x147 mm, 78x54 mm X-Y range.

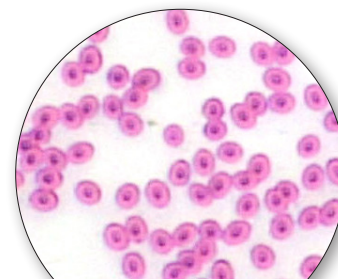
Focusing: Coaxial coarse (adjustable tension) and fine focusing mechanism with limit stop to prevent the contact between objective and specimen.

Condenser: Phase condenser (10x/20x, 40x, 100x) with darkfield (dry) and brightfield.

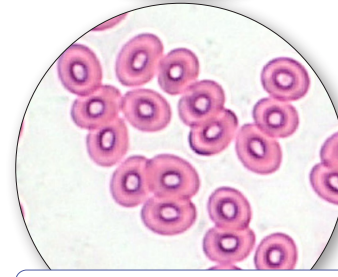
Illumination (Fixed Koehler type): X-LED³ with white 3.6 W LED (6,300K) with brightness control. Multi-plug 100-240Vac/6Vdc external power supply.

B-383DK - Darkfield Microscope

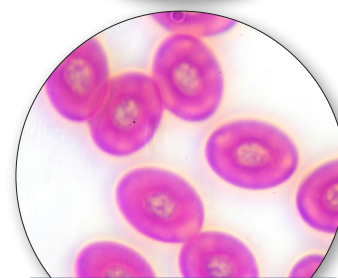
Laboratory upright microscope for brightfield and darkfield observations with N-PLAN objectives (and W-PLAN 100x with iris) for biology and especially darkfield fresh blood analysis and the exclusive **X-LED³** illumination system. The special condenser with integrated, exclusive X-LED3 illuminator replaces any other external and expensive lighting source required for these applications and is ideal for great-looking, rich and high-quality specimen view. Our immersion darkfield system provides the same result achieved by 150W external illuminators in combination with traditional cardioid darkfield condenser.



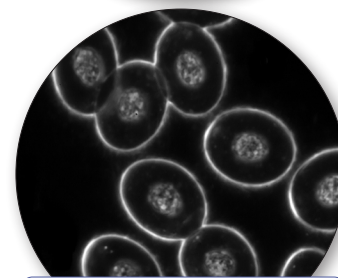
10x



40x



100x Brightfield



100x Darkfield

| Part | Description |
|---------------------------------|---|
| Observation mode: | Brightfield, oil immersion darkfield. |
| Head: | Trinocular (fixed 50/50), 30° inclined, 360° rotating. |
| Interpupillary distance: | Adjustable between 48 and 75 mm. |
| Dioptric adjustment: | On the left eyepiece tube. |
| Eyepieces: | WF10x/20 mm, high eye-point and secured by screw. |
| Nosepiece | Quintuple revolving nosepiece, rotation on ball bearings. |
| Objectives: | N-PLAN 4x/0.10 N-PLAN 10x/0.25 N-PLAN 40x/0.65 W-PLAN 100x/1.25 (oil) with iris All with anti-fungus treatment. |

| Part | Description |
|---|--|
| Specimen stage: | Double layer rackless mechanical stage, 150x139 mm, 75x33 mm X-Y range. |
| Focusing: | Coaxial coarse (adjustable tension) and fine focusing mechanism with limit stop to prevent the contact between objective and specimen. |
| Brightfield condenser: | Abbe N.A. 1.25, with objective-coded iris diaphragm, focusable and centerable. |
| Darkfield condenser: | Darkfield N.A. 1.36 (oil immersion) with built-in X-LED ³ . |
| Transmitted illumination (Fixed Koehler type): | X-LED ³ with white 3.6 W LED (6,300K) with brightness control. Multi-plug 100-240Vac/6Vdc external power supply. |

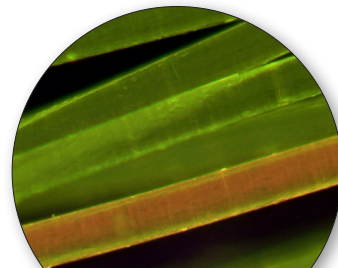
B-383FL - HBO Fluorescence Microscope

2

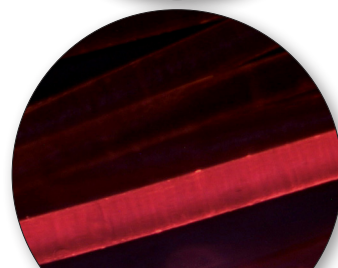
Laboratory

Laboratory upright microscope for brightfield and fluorescence observations with IOS N-PLAN objectives.

The HBO fluorescence illuminator provides an outstanding flexibility of use, standing the blue and green filter sets (supplied as standard) for Auramine, FITC, GFP and YFP (with blue filter set) plus Rhodamine, Texas Red and TRITC (with the green one), yet giving the possibility to combine any other specific filter sets for future upgrade. Transmitted light through the exclusive **X-LED³** to ensure great-looking, rich and high-quality specimen view.



10x - Blue excitation



10x - Green excitation

Standard filterset

| Name | Excitation filter (nm) | Dichroic mirror cut-off (nm) | Emission filter (nm) |
|---------|------------------------|------------------------------|----------------------|
| B Blue | 460 – 490 | 505 | 515LP |
| G Green | 510 – 550 | 570 | 575LP |

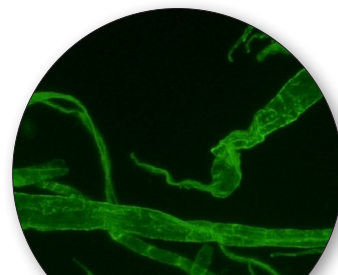


| Part | Description |
|--------------------------------------|--|
| Observation mode: | Brightfield, HBO fluorescence. |
| Epi-illumination and filters: | HBO 100 W high pressure mercury lamp. 3-position filter holder; blue and green included. |
| Head: | Trinocular (fixed 50/50), 30° inclined, 360° rotating. |
| Interpupillary distance: | Adjustable between 48 and 75 mm. |
| Dioptric adjustment: | On the left eyepiece tube. |
| Eyepieces: | WF10x/20 mm, high eye-point and secured by screw. |
| Nosepiece: | Quintuple revolving nosepiece, rotation on ball bearings. |
| Objectives: | IOS N-PLAN 4x/0.10 IOS N-PLAN 10x/0.25 IOS N-PLAN 20x/0.40 IOS N-PLAN 40x/0.65 IOS N-PLAN 100x/1.25 (Oil/Water) All with anti-fungus treatment. |

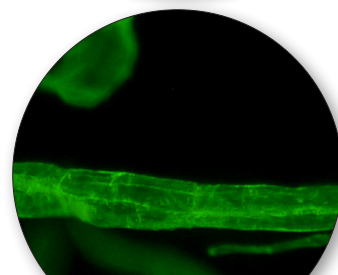
| Part | Description |
|---|--|
| Specimen stage: | Double layer rackless mechanical stage, 233x147 mm, 78x54 mm X-Y range. |
| Focusing: | Coaxial coarse (adjustable tension) and fine focusing mechanism with limit stop to prevent the contact between objective and specimen. |
| Condenser: | Abbe N.A. 1.25, with objective-coded iris diaphragm, focusable and centerable. |
| Transmitted illumination (Fixed Koehler type): | X-LED ³ with white 3.6 W LED (6,300K) with brightness control. Multi-plug 100-240Vac/6Vdc external power supply. |
| Order code: | B-383FL-EU With EU plug B-383FL-US With US plug B-383FL-UK With UK plug |

B-383LD - LED Fluorescence Microscope

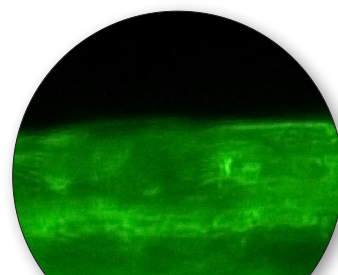
Entry-level laboratory upright microscope for brightfield and fluorescence observations with IOS N-PLAN objectives. The extremely powerful LED fluorescence illuminator is combined with blue excitation filter set for the visualization of the following fluorochromes: Acridine Yellow, Acridine Orange, Auramine, DiO, DTAF, FITC, GFP, YFP, etc. LED fluorescence ensures unparalleled convenience eliminating warm-up/cool-down times and all the inconveniences related lamp replacement and adjustment. Transmitted light through the exclusive **X-LED³** to ensure great-looking, rich and high-quality specimen view.



4x



10x



40x

Standard filterset

| Name | Excitation filter (nm) | Dichroic mirror cut-off (nm) | Emission filter (nm) |
|--------|------------------------|------------------------------|----------------------|
| B Blue | 460 – 490 | 505 | 515LP |

| Part | Description |
|-------------------------------------|---|
| Observation mode: | Brightfield, LED fluorescence. |
| Epi-illumination and filter: | High-power blue LED with brightness control. 3-position filter holder; blue included. |
| Head: | Trinocular (fixed 50/50), 30° inclined, 360° rotating. |
| Interpupillary distance: | Adjustable between 48 and 75 mm. |
| Dioptric adjustment: | On the left eyepiece tube. |
| Eyepieces: | WF10x/20 mm, high eye-point and secured by screw. |
| Nosepiece: | Quintuple revolving nosepiece, rotation on ball bearings. |
| Objectives: | IOS N-PLAN 4x/0.10 IOS N-PLAN 10x/0.25 IOS N-PLAN 40x/0.65 IOS N-PLAN 100x/1.25 (Oil/Water) All with anti-fungus treatment. |

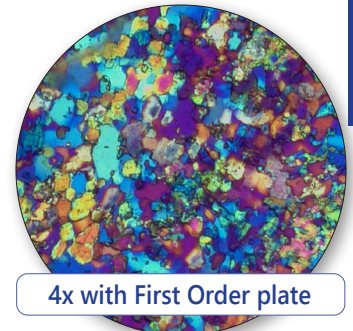
| Part | Description |
|---|--|
| Specimen stage: | Double layer rackless mechanical stage, 233x147 mm, 78x54 mm X-Y range. |
| Focusing: | Coaxial coarse (adjustable tension) and fine focusing mechanism with limit stop to prevent the contact between objective and specimen. |
| Condenser: | Abbe N.A. 1.25, with objective-coded iris diaphragm, focusable and centerable. |
| Transmitted illumination (Fixed Koehler type): | X-LED ³ with white 3.6 W LED (6,300K) with brightness control. Multi-plug 100-240Vac/6Vdc external power supply. |

B-383POL - Polarizing Microscope

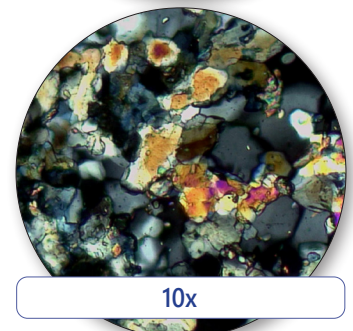
2

Laboratory

Upright microscope for brightfield and polarizing light observations with strain-free IOS N-PLAN POL objectives. Complete of polarizer and analyzer filters, Bertrand lens for conoscopic observation, compensator plates and high-precision rotatable stages. It comes with the exclusive **X-LED³** illumination system to deliver bright and clear images, along with all the accessories to perform accurate polarization analysis in biology and materials science.



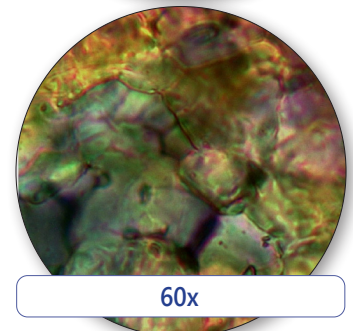
4x with First Order plate



10x



10x with First Order plate



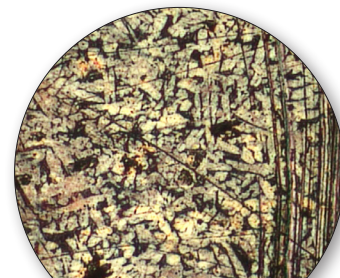
60x

| Part | Description |
|---|---|
| Observation mode: | Brightfield, transmitted polarized light and conoscopy. |
| Bertrand lens and polarizing attachment: | Swing-out type with centering mechanism for observation in conoscopy/orthoscopy. Rotatable analyzer from 0° to 90° with graduated scale. Tint plates: 1° order red (λ); $\lambda/4$; Quartz wedge. |
| Head: | Trinocular (fixed 50/50), 30° inclined, 360° rotating. |
| Interpupillary distance: | Adjustable between 48 and 75 mm. |
| Dioptric adjustment: | On the left eyepiece tube. |
| Eyepieces: | WF10x/20 mm, high eye-point and secured by screw. One with crosshair. |
| Nosepiece: | Quadruple revolving nosepiece, rotation on ball bearings. Centering system for each objective. |

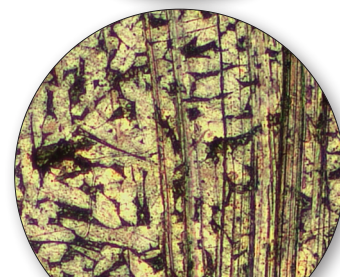
| Part | Description |
|---|--|
| Objectives (strain-free): | IOS N-PLAN POL 4x/0.10 IOS N-PLAN POL 10x/0.25 IOS N-PLAN POL 40x/0.65 IOS N-PLAN POL 60x/0.80 All with anti-fungus treatment. |
| Specimen stage: | Rotatable stage with locking mechanism. Vernier scale with accuracy 0.1 mm. Diameter 160 mm. Specimen slide clamps. |
| Focusing: | Coaxial coarse (adjustable tension) and fine focusing mechanism with limit stop to prevent the contact between objective and specimen. |
| Condenser: | Abbe N.A. 1.25, with objective-coded iris diaphragm, focusable and centerable. With rotating polarizing filter. |
| Transmitted illumination (Fixed Koehler type): | X-LED ³ with white 3.6 W LED (6.300 K) with brightness control. Multi-plug 100-240Vac/6Vdc external power supply. |

B-383MET - Metallurgical Microscope

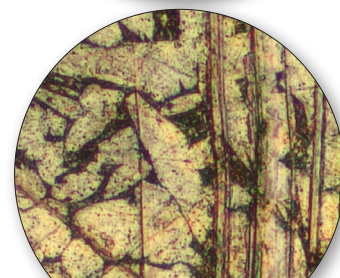
Brightfield upright microscope with IOS W-PLAN MET objectives and metallurgical attachment combining the exclusive **X-LED³** lighting source both for incident and transmitted illumination. The NCG (no cover glass) objectives are especially designed for microscopy use without a cover slip ideal for metallographic samples and other opaque specimens.



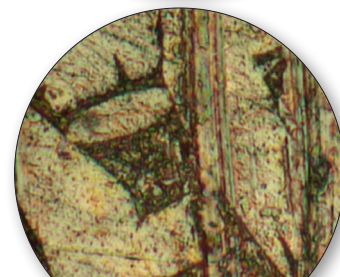
5x



10x



20x



50x

| Part | Description |
|---|---|
| Observation mode: | Brightfield, incident polarized light. |
| Epi-illumination and polarizing filters: | X-LED ³ with white 3.6 W LED (6.300 K) with brightness control. Field and aperture diaphragms, polarizer & analyzer filters. |
| Head: | Trinocular (fixed 50/50), 30° inclined, 360° rotating. |
| Interpupillary distance: | Adjustable between 48 and 75 mm. |
| Dioptric adjustment: | On the left eyepiece tube. |
| Eyepieces: | WF10x/20 mm, high eye-point and secured by screw. |
| Nosepiece: | Quintuple revolving nosepiece, rotation on ball bearings. |

| Part | Description |
|---|--|
| Objectives (strain-free): | IOS W-PLAN MET 5x/0.12 IOS W-PLAN MET 10x/0.25 IOS W-PLAN MET 20x/0.40 IOS W-PLAN MET 50x/0.75 All with anti-fungus treatment. |
| Specimen stage: | Double layer rackless mechanical stage, 233x147 mm, 78x54 mm X-Y range. With tempered glass plate. |
| Focusing: | Coaxial coarse (adjustable tension) and fine focusing mechanism with limit stop to prevent the contact between objective and specimen. |
| Condenser: | Abbe N.A. 1.25, with objective-coded iris diaphragm, focusable and centerable. |
| Transmitted illumination (Fixed Koehler type): | X-LED ³ with white 3.6 W LED (6.300 K) with brightness control. Multi-plug 100-240Vac/6Vdc external power supply. |



WolfLabs

Pricing on any accessories shown can be found by keying the part number into the search box on our website.

The specifications listed in this brochure are subject to change by the manufacturer and therefore cannot be guaranteed to be correct. If there are aspects of the specification that must be guaranteed, please provide these to our sales team so that details can be confirmed.

www.wolflabs.co.uk

Tel : 01759 301142

Fax : 01759 301143

sales@wolflabs.co.uk

Please contact us if this literature doesn't answer all your questions.